

Technical Data and Ordering Information



ToolReg® - In-Line Pre Set Regulator

Installation: The regulator ensures that a constant pressure is always maintained, despite the normal pressure fluctuations in a system. The regulator is intended for use with compressed air or neutral gases. The ToolReg® must be mounted directly on the pneumatic tool in order to ensure correct pressure, so that possible pressure drops in hoses, tubes etc. do not influence the pressure on the tool itself. Furthermore, the residual pressure in the tools is relieved when it is removed from the compressed air supply line, preventing unintentional actuation of the tool with disastrous consequences.

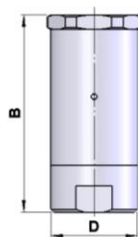
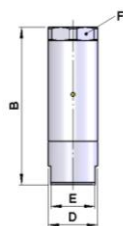
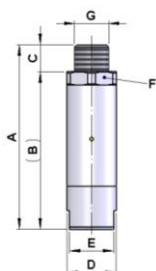
Thread Connection	Outlet Pressure	Tolerances* (at 10 ltrs. Min)	Flow Ltrs./min - scfm (Pe = 12bar/180 psig, Δp 0.5 bar/7.5 psig)	Dimensions (mm)						Weight Gram	Maxim Inlet Pressure	Temperature Range	Material	Order Code
				A	B	C	D	E	F					
BSP	1/4" TOOLREG female-female													
1/4	2 bar	+/- 0.3 bar / 4.35 psig	500 / 17	-	59	-	19	16	19	33	25 bar 365psig	0 °C to 80°C -32°F to 176°F	Housing: Aluminium other parts: Stainless Steel, Nitrile Rubber, Brass, PPH	232A0220
1/4	3 bar	+/- 0.3 bar / 4.35 psig	550 / 19	-	59	-	19	16	19	33				232A0230
1/4	4 bar	+/- 10%	600 / 21	-	59	-	19	16	19	33				232A0240
1/4	5 bar	+/- 10%	650 / 23	-	59	-	19	16	19	33				232A0250
1/4	6 bar	+/- 10%	700 / 25	-	59	-	19	16	19	33				232A0260
1/4	7 bar	+/- 10%	700 / 25	-	59	-	19	16	19	33				232A0270
1/4	8 bar	+/- 10%	800 / 28	-	59	-	19	16	19	33				232A0280
NPT	1/4" TOOLREG female-female													
1/4"	2 bar / 30 psig	+/- 0.3 bar / 4.35 psig	500 / 17	-	59	-	19	16	19	33	25 bar 365psig	0 °C to 80°C -32°F to 176°F	Housing: Aluminium other parts: Stainless Steel, Nitrile Rubber, Brass, PPH	232AS1230
1/4"	3 bar / 45 psig	+/- 0.3 bar / 4.35 psig	550 / 19	-	59	-	19	16	19	33				232AS1245
1/4"	4 bar / 60 psig	+/- 10%	600 / 21	-	59	-	19	16	19	33				232AS1260
1/4"	5 bar / 75 psig	+/- 10%	650 / 23	-	59	-	19	16	19	33				232AS1275
1/4"	6 bar / 90 psig	+/- 10%	700 / 25	-	59	-	19	16	19	33				232AS1290
1/4"	7 bar / 105 psig	+/- 10%	700 / 25	-	59	-	19	16	19	33				232AS12105
1/4"	8 bar / 120 psig	+/- 10%	800 / 28	-	59	-	19	16	19	33				232AS12120
BSP	1/4" TOOLREG female-male													
1/4	2 bar	+/- 0.3 bar / 4.35 psig	500 / 17	69	59	10	19	16	19	40	25 bar 365psig	0 °C to 80°C -32°F to 176°F	Housing: Aluminium other parts: Stainless Steel, Nitrile Rubber, Brass, PPH	232F0220
1/4	3 bar	+/- 0.3 bar / 4.35 psig	550 / 19	69	59	10	19	16	19	40				232F0230
1/4	4 bar	+/- 10%	600 / 21	69	59	10	19	16	19	40				232F0240
1/4	5 bar	+/- 10%	650 / 23	69	59	10	19	16	19	40				232F0250
1/4	6 bar	+/- 10%	700 / 25	69	59	10	19	16	19	40				232F0260
1/4	7 bar	+/- 10%	700 / 25	69	59	10	19	16	19	40				232F0270
1/4	8 bar	+/- 10%	800 / 28	69	59	10	19	16	19	40				232F0280
NPT	1/4" TOOLREG female-male													
1/4"	2 bar / 30 psig	+/- 0.3 bar / 4.35 psig	500 / 17	69	59	-	19	16	19	40	25 bar 365psig	0 °C to 80°C -32°F to 176°F	Housing: Aluminium other parts: Stainless Steel, Nitrile Rubber, Brass, PPH	232FS1230
1/4"	3 bar / 45 psig	+/- 0.3 bar / 4.35 psig	550 / 19	69	59	-	19	16	19	40				232FS1245
1/4"	4 bar / 60 psig	+/- 10%	600 / 21	69	59	-	19	16	19	40				232FS1260
1/4"	5 bar / 75 psig	+/- 10%	650 / 23	69	59	-	19	16	19	40				232FS1275
1/4"	6 bar / 90 psig	+/- 10%	700 / 25	69	59	-	19	16	19	40				232FS1290
1/4"	7 bar / 105 psig	+/- 10%	700 / 25	69	59	-	19	16	19	40				232FS12105
1/4"	8 bar / 120 psig	+/- 10%	800 / 28	69	59	-	19	16	19	40				232FS12120
BSP	3/8" TOOLREG female-female													
3/8	2 bar	+/- 0.3 bar / 4.35 psig	1400 / 49	-	63	-	25	22	25	60	25 bar 365psig	- 0 °C to 80°C -32°F to 176°F	Housing: Aluminium other parts: Stainless Steel, Nitrile Rubber, Brass, PPH	232A0320
3/8	3 bar	+/- 0.3 bar / 4.35 psig	1400 / 49	-	63	-	25	22	25	60				232A0330
3/8	4 bar	+/- 10%	1800 / 63	-	63	-	25	22	25	60				232A0340
3/8	5 bar	+/- 10%	1800 / 63	-	63	-	25	22	25	60				232A0350
3/8	6 bar	+/- 10%	2200 / 77	-	63	-	25	22	25	60				232A0360
3/8	8 bar	+/- 10%	2600 / 92	-	63	-	25	22	25	60				232A0380
NPT	3/8" TOOLREG female-female													
3/8"	2 bar / 30 psig	+/- 0.3 bar / 4.35 psig	1400 / 49	-	63	-	25	22	25	60	25 bar 365psig	- 0 °C to 80°C -32°F to 176°F	Housing: Aluminium other parts: Stainless Steel, Nitrile Rubber, Brass, PPH	232AS1330
3/8"	3 bar / 45 psig	+/- 0.3 bar / 4.35 psig	1400 / 49	-	63	-	25	22	25	60				232AS1345
3/8"	4 bar / 60 psig	+/- 10%	1800 / 63	-	63	-	25	22	25	60				232AS1360
3/8"	5 bar / 75 psig	+/- 10%	1800 / 63	-	63	-	25	22	25	60				232AS1375
3/8"	6 bar / 90 psig	+/- 10%	2200 / 77	-	63	-	25	22	25	60				232AS1390
3/8"	8 bar / 120 psig	+/- 10%	2600 / 92	-	63	-	25	22	25	60				232AS13130
On request:	Version in stainless steel and other pre-set pressures													

On request: Version in stainless steel and other pre-set pressures

Tolerances*

Test medium: Air, Pe = 6 bar/90 psig (at Pa <= 4 bar/60 psig), 10 NI/Min / 0.35 scfm

Test medium: Air, Pe = 10 bar/150 psig (at Pa >= 4 bar/60 psig), 10 NI/Min / 0.35 scfm



Technical Data and Ordering Information



ToolReg® - In-Line Pre Set Regulator

Installation: The regulator ensures that a constant pressure is always maintained, despite the normal pressure fluctuations in a system. The regulator is intended for use with compressed air or neutral gases. The Toolreg® must be mounted directly on the pneumatic tool in order to ensure correct pressure, so that possible pressure drops in hoses, tubes etc. do not influence the pressure on the tool it self. Furthermore, the residual pressure in the tools is relieved when it is removed from the compressed air supply line, preventing unintentional actuation of the tool with disastrous consequences.

Thread Connection	Outlet Pressure	Tolerances* (at 10 ltrs. Min)	Flow Ltrs /min - scfm (Pe = 12bar/180 psig, Δp 0.5 bar/7.5	Dimensions (mm)						Weight Gram	Maximum Inlet Pressure	Temperature Range	Material	Order Code
				A	B	C	D	E	F					
BSP	1/2" TOOLREG female-female													
1/2	2 bar	+/- 0.3 bar / 4.35 psig	1400 / 49	-	68	-	30	27	30	90	25 bar 365psig	- 0 °C to 80°C -32°F to 176°F	Housing: Aluminium other parts: Stainless Steel, Nitrile Rubber, Brass, PPH	232A0420
1/2	3 bar	+/- 0.3 bar / 4.35 psig	1400 / 49	-	68	-	30	27	30	90				232A0430
1/2	4 bar	+/- 10%	1800 / 63	-	68	-	30	27	30	90				232A0440
1/2	5 bar	+/- 10%	1800 / 63	-	68	-	30	27	30	90				232A0450
1/2	6 bar	+/- 10%	2200 / 77	-	68	-	30	27	30	90				232A0460
1/2	8 bar	+/- 10%	2600 / 92	-	68	-	30	27	30	90				232A0480
NPT	1/2" TOOLREG female-female													
1/2"	2 bar / 30 psig	+/- 0.3 bar / 4.35 psig	1400 / 49	-	68	-	30	27	30	90	25 bar 365psig	- 0 °C to 80°C -32°F to 176°F	Housing: Aluminium other parts: Stainless Steel, Nitrile Rubber, Brass, PPH	232AS1430
1/2"	3 bar / 45 psig	+/- 0.3 bar / 4.35 psig	1400 / 49	-	68	-	30	27	30	90				232AS1445
1/2"	4 bar / 60 psig	+/- 10%	1800 / 63	-	68	-	30	27	30	90				232AS1460
1/2"	5 bar / 75 psig	+/- 10%	1800 / 63	-	68	-	30	27	30	90				232AS1475
1/2"	6 bar / 90 psig	+/- 10%	2200 / 77	-	68	-	30	27	30	90				232AS1490
1/2"	8 bar / 120 psig	+/- 10%	2600 / 92	-	68	-	30	27	30	90				232AS14140
BSP	3/4" TOOLREG female-female													
3/4	2 bar	+/- 0.3 bar / 4.35 psig	2500 / 88	-	101.5	-	40	34	40	280	25 bar 365psig	- 0 °C to 80°C -32°F to 176°F	Housing: Aluminium other parts: Stainless Steel, Nitrile Rubber, Brass, PPH	232A0520
3/4	4 bar	+/- 10%	3200 / 113	-	101.5	-	40	34	40	280				232A0540
3/4	6 bar	+/- 10%	3900 / 138	-	101.5	-	40	34	40	280				232A0560
3/4	8 bar	+/- 10%	4600 / 162	-	101.5	-	40	34	40	280				232A0580
NPT	3/4" TOOLREG female-female													
3/4"	2 bar / 30 psig	+/- 0.3 bar / 4.35 psig	2500 / 88	-	101.5	-	40	34	40	280	25 bar 365psig	- 0 °C to 80°C -32°F to 176°F	Housing: Aluminium other parts: Stainless Steel, Nitrile Rubber, Brass, PPH	232AS1530
3/4"	4 bar / 60 psig	+/- 10%	3200 / 113	-	101.5	-	40	34	40	280				232AS1560
3/4"	6 bar / 90 psig	+/- 10%	3900 / 138	-	101.5	-	40	34	40	280				232AS1590
3/4"	8 bar / 120 psig	+/- 10%	4600 / 162	-	101.5	-	40	34	40	280				232AS15120
On request:	Version in stainless steel and other pre-set pressures													

Tolerances*

Test medium: Air, Pe = 6 bar/90 psig (at Pa <= 4 bar/60 psig), 10 NI/Min / 0,35 scfm

Test medium: Air, Pe = 10 bar/150 psig (at Pa >= 4 bar/60 psig), 10 NI/Min / 0,35 scfm

